

LVN20S

HIGH PERFORMANCE NON-VISION FIRE + SMOKE AIR TRANSFER GRILLE

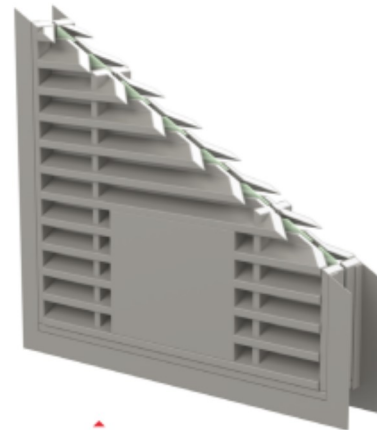
FIRE + SMOKE RESISTANT AIR TRANSFER GRILLES

The LVN20S provides a unique solution to the problem of containing both fire and smoke in emergency conditions yet offering good air transfer through doors in everyday use. Using the same intumescent louvred slat configuration as the LVN20, but incorporating an electro mechanically operated smoke shutter mechanism. Can provide up to 60 minutes fire and smoke resistance.



Key benefits

- ▶ Contains cold smoke + toxic gases remote from the source of fire
- ▶ Simple installation
- ▶ Auto reset + fail-safe
- ▶ Safe low DC voltage
- ▶ Status reporting + auto-cycling via Talkback Damper Control Monitor (DCM)
- ▶ Optional audio warning facility
- ▶ Connects to fire panel +/-or Building Management System (BMS)
- ▶ BMS alarm notification via Alarm Monitoring System (AMS)
- ▶ Nominal 5mA current open/closed
- ▶ Max 200mA in operation
- ▶ Allows bi-directional airflow
- ▶ Louvred slats give privacy.



LVN20S

AIR TRANSFER GRILLE SELECTOR (MM)

ATG NOMINAL SIZE	200 x 200	300 x 300	400 x 400
ATG ACTUAL SIZE	198 x 198	298 x 298	398 x 398
FLANGE SIZE	201 x 201	301 x 301	401 x 401
APERTURE SIZE	209 x 209	309 x 309	409 x 409

SYSTEM SPECIFICATIONS

Test evidence

- ▶ Fire: BS 476-20 & 22:1987.
- ▶ Smoke: BS 476-31.1:1983 (shutterplate).

Performance

- ▶ Can be used to provide up to 60 minutes resistance to fire + cold smoke.

Size

- ▶ Width: 200mm - 400mm (in 50mm increments).
- ▶ Height: 200mm - 400mm (in 50mm increments).

Thickness

- ▶ 2 pieces x 20mm.

Free area

- ▶ Approx 30% free area.

Finish

- ▶ Silver as standard.

Orientation

- ▶ LVN20S must be used in the vertical plane.

Application

- ▶ Suitable for doors.
- ▶ Note: in applications where high levels of humidity or wetness are anticipated, please speak to our Technical Department for alternatives.

Positional requirements

- ▶ Certifire: The upper edge of the grille shall be no higher than 800mm from floor level.
- ▶ Test Report Applus 19/19940-1428: The upper edge of the grille shall be no higher than 1350mm from floor level.

Material

- ▶ Rigid PVC slats with an intumescent core.
- ▶ Steel or aluminium flange.
- ▶ Electro mechanically operated smoke shutter mechanism.

Fixing

- ▶ Requires an aperture 9mm over size. E.g. a 300mm x 300mm needs an aperture 309mm x 309mm to accommodate the flange and liner.
- ▶ Screwed into door with an aperture lined with Lorient intumescent liner (B24402).

Use with

- ▶ Talkback damper control system.
- ▶ Conductor hinges.
- ▶ Optional Alarm Monitoring System (AMS) and battery backup.

Certification

